

High Plains District Camporee



April 26th – April 28th, 2019

MC ARTHUR'S FARM

Bethune, Colorado

High Plains Camporee

Table of Contents

REGISTRATION PERIOD	3
SCOUTMASTER CAMPOREE CHECKLIST.....	4
WELCOME LETTER.....	5
SPECIAL NOTICES FOR 2019	6
CAMPOREE PROGRAM STAFF.....	7
REGISTRATION AND CHECK-IN PROCEDURES.....	7
GENERAL INFORMATION	8
CAMPOREE ACTIVITIES	11
FIRST CLASS TRAIL EVENTS.....	13
MERIT BADGE PROGRAM.....	16
NOTES TO LEADERS ABOUT MERIT BADGES:	17
SCOUTMASTER ADVANCEMENT RESPONSIBILITIES.....	17
2018 MERIT BADGES	18
MERIT BADGE CHOICES - UNIT WORKSHEET	19
CAMPOREE AGENDA.....	20
CAMPOREE LOCATION/DIRECTIONS	21
HAZARDOUS WEATHER, TRAVEL & REFUND POLICY.....	22
EMERGENCY UNIT CONTACT INFORMATION	22
HEALTH FORMS.....	24
BSA AVIATION FLIGHTS CONSENT	25
BROTHERHOOD TRAINING AND CEREMONY.....	26
FIRST CLASS TRAIL MAP	27
CAMPSITE MAP & C	28

REGISTRATION PERIOD

Registration will be open from Friday at 5:00pm, April 5th – Friday night 5:00pm, April 12, 2019

April 14, 2019 Registration will reopen at 8am for corrections and additions

Merit Badge placement is done on a first come, first served basis! The longer we are into the registration period, the greater the chances that a merit badge class will fill!

SCOUTMASTER CAMPOREE CHECKLIST

- Determine list of volunteers who will be working on the First Class Trail & provide phone & email contact information
- Prepare equipment for campsite inspection (gadgets, entry, latrine, tents, etc.)
- Identify & provide names of chaplain assistants for scout Sunday service
- Identify OA call out names & brotherhood candidates. Have youth and adults bring OA sashes
- Determine merit badge choices for scouts (See merit badge choices worksheet)
- Identify drivers for merit badge classes offsite & provide phone & email contact information
- Prepare blue cards before arrival at Camporee
- Obtain permission forms for scouts in the aviation merit badge
- List scouts on the First Class Trail
- We will continue the tradition of the High Plains Camporee leather streamer for the unit flag. Be sure to bring your streamer received in previous years so it can be re-branded. If you did not attend the Camporee since 2012, we will provide your unit with a leather streamer to record your camporee attendance.
- Identify the name & contact information for your unit's emergency contact person(s)**
NOTE: This individual MUST be able to contact unit leadership in case of a weather emergency or other emergency situations.
- Collect health forms

Welcome Letter ***"NEW TRADITIONS –SCOUTS BSA"***

On behalf of the High Plains District and our incredible Community Volunteers, I want to welcome you to McArthur's Farm, Bethune, Colorado, the permanent site of the High Plains District Camporee. Our theme this year is "New Traditions- Scouts BSA", as Scouting enters a new era, the "Back to Basics" values of the High Plains Camporee are as relevant today as they were 25 years ago.

The origin of the HP Camporee was a group of local Troops coming together to camp, learn and play. Over the years the Camporee has grown in size and traditions. Some of the traditions the High Plains Camporee is known for are: McArthur's Farm; opening ceremony; the First-Class Trail; merit badge classes; leather streamer; camp site inspections and awards; campfire with OA Callout and Scout's Own service and the camporee patch. Many of the Units that have been attending for years have developed their own traditions of campsite selection, campsite layout, Friday night campfire and even latrine construction.

McArthur's Farm, north of Bethune is situated under the large cottonwood trees along the Republican River. The High Plains Camporee offers the perfect place to camp under the stars, sit around an open campfire, learn and master basic scoutcraft skills, and earn some unique merit badges rarely offered anywhere else in our Council or at Summer Camp.

The High Plains Camporee is a favorite camping event for many troops in and out of the Pikes Peak Council because it offers a unique variety of activities for all scouts. It is a true Advancement Camporee that offers 22 merit badges, which we try to vary each year. In addition, we are very proud of the First-Class Advancement Trail for new scouts who may have recently joined your troop.

In addition, the High Plains Camporee, affords a special opportunity for the Webelos Scouts at the Adventure Trail. Webelos Scouts earn a series of Activity Adventure Pins and participate in some traditional Boy Scout Camping activities such as: visiting a Boy Scout encampment to see what the Boy Scout camping experience is truly like; the opportunity to cook over an open fire; and hike around the area.

We have often been asked why the High Plains Camporee has been so successful over the years, and why it continues to draw several hundred scouts to this rural camping area every year. The basic reason is that we have been blessed with an extraordinary staff of dedicated Scouters and Community volunteers who participate in the Camporee each year. We continue to learn and benefit from our senior staff volunteers that originally began the Camporee many years ago and continue to guide the current Camporee Leadership Team each year, which provides consistency and tradition.

All in all, the 2019 High Plains Camporee is shaping up to be another premier camping event, that allows you and your unit to continue your traditions and start new traditions.

I look forward to seeing you at the 2019 High Plains Camporee "New Traditions-Scouts BSA" the unique opportunity to camp in rural Bethune, Colorado on April 26-28th!!

Since there are some changes to this year's event, please take some time to review the packet.

Bob Lightbody High Plains Camporee Chair

Special Notices for 2019

Some changes have been to the Camporee packet for 2019

1. We have simplified the fee the structure this year, all participants will be \$13.00
2. Beginning this year the famous (High Plains Camporee Patch) will be sold at Camporee and will not be part of the registration fees. The Registration fee has been decreased by \$2.00 to reflect this change.
3. We are excited to have IOLS adult training offered this year, by Pikes Peak Council Training Committee. Registration is on the Council web site and is separate from the Camporee and the adults cannot be counted as two deep leadership during Camporee.
4. After very positive feedback The First Class Trail will continue the passport booklet with requirements covered at each station.
5. As the Camporee has grown in popularity over the years, there has been an increased need for manpower to run all the activities. Therefore, the Camporee staff requires the involvement of all units in providing sufficient volunteers to ensure the success of the event. This means that **all adults not participating in IOLS** will be asked to get involved at some level to assist the event staff.
6. Please review and adhere to requirements stated the pre-requisite portion of the merit badge section. A few of the merit badges require work done either before or after Camporee and are explained in the merit badge section.
7. Suggested Camper capacity for campsites are listed, please allow the larger units to use the larger sites.

If you have any questions or need any additional information about the Camporee after reading the packet, please, please don't hesitate to contact,

Bob Lightbody, **High Plains District Camping Chairman at 719-439-9092 or Boblightbody08@gmail.com** .

CAMPOREE PROGRAM STAFF

High Plains District Camping Chairman & CAMPOREE CHAIRMAN

Mr. Robert (“Bob”) Lightbody
719-439-9092
Boblightbody08@gmail.com

<u>Merit Badge Program Coordinators</u>	<u>First Class Trail Coordinators</u>	<u>Camporee Registrar</u>	<u>Logistics & Support Staff</u>
Mr. Jerry Gross Mr. Robin Arends 719-346-8676 719-346-7794	Mr. Mitch Howell Mr. Mark Howell	Ms. Maria Herndon	Mr. Bob Lightbody

REGISTRATION AND CHECK-IN PROCEDURES

Registration for the Camporee through the Pikes Peak Council web site:
www.pikespeakbsa.org.

Select calendar, then double click on the HP Camporee event on April 26th. This will take you to the information/ registration page.

All units **must check-in** at the Registration Tent upon arriving. **Please be prepared to pay for any registration, late fees, or merit badge fees not yet submitted, AND turn in merit badge blue cards.** We will verify the name and number of people in your unit attending the Camporee at the time of check-in.

NOTE: *The Camporee staff would also like to strongly suggest that each unit, particularly the larger units, consider sending an advance party to the Camporee who will be carrying the unit’s registration information, blue cards, etc. as well as any additional registrations so that the Registrar will have sufficient time to ensure all scouts and units are completely registered prior to the Scoutmaster’s Meeting on Friday evening at 9:30pm. **Check in closes at 9:00 pm!!!***

1. **NOTE: Site selection is different this year.** Each unit will be asked to select their camp site selection during registration. You will be able to list 5 campsites of preference, based on 1st come 1st serve the campsites will be assigned by April 18. The map is at the end of the packet
2. Please do not remove the stakes at the camp sites. The two stakes are brought in by the Camporee staff member that clears the unit campsite prior to departure.
3. **ONLY ONE vehicle** and Troop trailer will be allowed to stay in the campsite after unloading. We ask that once that vehicle is parked at the campsite that it will remain there for safety reasons unless there is an emergency and need to move the vehicle, or the vehicle is needed to transport to Merit Badge sites. **ALL OTHER VEHICLES** will need to be parked on the hillside in the designated parking areas to increase open areas in the campsites.

GENERAL INFORMATION

Cost: \$13.00 per Scout and \$13.00 per Leader

Girl Troops: Beginning this year the Camporee will welcome Girl Troops as part of Scouts BSA to participate at the High Plains Camporee. As we grow and learn through this experience, I ask everyone act in accordance with the Scout Oath and Law and we will all have a Camporee to remember.

Campsite Boundaries: Please advise your Adults and Scouts to respect the boundaries of other Unit Campsites, do not enter another Campsite without permission. A good rule of thumb is to leave and enter your Campsites from access Road.

Camp Behavior – Unit leaders are expected to maintain control over the behavior of their scouts while in camp. Unsafe behavior, such as stick fighting, etc. will not be permitted for the safety of all those in camp.

Camping Area: The camping area is mostly treed. The first troops to register will have first choice of campsites. *We are using the entire camping area and minimizing cars in camps, which allow troops to spread out over the area to afford maximum camping room.*

Boundaries: Since we are camping on private property, it is important that all units' camp within the area designated for the Camporee. While it is permissible to walk the farm, we are to respect the property and not deface the farm or its surrounding property in any way. **The nearby Republican River, the farmhouse, outbuildings, and livestock are OFF-LIMITS to ALL Scouts unless you are working on a Merit Badge under the direction of a Counselor.** NO INFRACTION of THIS RULE WILL BE TOLERATED. If you do not comply with this request, you will be asked to leave the Camporee.

Fires: If there is **NOT** a fire ban, you will be permitted to dig a pit fire, as long as you properly cover the fire-pit at the conclusion of the Camporee. (**NOTE: We strongly encourage units to bring a fire-barrel in an effort to conserve the environment. Moreover, ALL open fires MUST be attended at all times**).

Water: Troops should practice water conservation, and bring enough water for your cooking/cleaning needs for the entire weekend. There is a water pump available to the scouts on the farm. Information on its location is available at the registration tent.

Latrines: Each unit will be expected to dig a pit latrine, as needed, for their troop, and will be responsible for ensuring that the latrine is properly covered at the end of the weekend. **PLEASE BE PREPARED TO DIG AND UTILIZE THE LATRINE YOU BUILD.** **NOTE: Poles, ropes, shovels, and tarps, etc. will be needed to prepare and cover the latrine, as well as for privacy, so ensure your troop is prepared with these materials in your equipment inventory.**

Emergency/Questions: There will be a tent set up as a central point of contact for questions and emergencies. If parents need to locate their scout (emergency, etc.) they can call the Kit Carson County Sheriff's Department at 719-346-9325 who will then contact us. Kit Carson County Sheriff's Department personnel will then relay this information to the Camporee staff, as needed.

First Aid: There will be a first aid area set up for emergencies. All emergencies should be handled through the first aid area. *We will have an EMT and or registered nurse on site at the Camporee.* A local hospital is also approximately 25 miles away.

Accountability/Responsibility: This will be the responsibility of the patrol leaders and adult unit leaders at all times. We don't want to lose anyone or have anyone get hurt.

Garbage: Please follow the RULE “what you take in, you take out.” Part of the checkout list will be policing for garbage. Please, be sure to police your area before leaving.

Visitors: Visitors to the Camporee are welcome to come observe for the day.

Uniforms: Scouts are encouraged to wear their Field Uniforms or Class B uniform at the Camporee.

No camouflage clothing (BDU/DCU/ACU) is allowed.

Unit Leader Support: Each unit **WILL BE REQUIRED** to provide adults to assist on the First Class Trail. In addition, since some of the merit badge sites are located outside of the McArthur Farm, Camporee Site, each unit is expected to assist the Camporee Staff by providing car-pool transportation to Merit Badge site locations. Registration will not be considered complete without all adults registered for the First Class Trail or Transportation of Merit Badge or assisting somewhere else at the Camporee! *We want and need adult assistance to make this event successful.*

Junior Leadership Team: Older Scouts in any units that are not interested in working on a merit badge will be permitted to join the Camporee Program Leadership Team as part of a Junior Leader Corps that will help support the District Camporee Staff. Youth must be Star rank or higher and age 14 or older.

Staff Meals: District staff members only, not associated with a unit will be fed with the District Volunteer Staff at the District Dining area. *Staff meals will be eaten at the staff dining area near the Webelos camping area.*

Lost & Found: Remind your Scouts to put their names on their clothing and other possessions. Lost & found will be at the Registration Tent.

Checkout Procedures: Each unit is expected to clean their campsite and make it appear as a no trace campsite. This means all garbage is removed and the area is policed; campfires are extinguished, covered, as are the latrine sites. Once all gear is packed and loaded, the senior patrol leader or adult volunteer will go to the registration area to request a staff member to inspect the campsite. Once inspected, the Camporee staff member will retrieve the remaining campsite marking stake and return it to the registration area.

Troop Flags: Each unit is expected to have their unit flag at the Camporee to help identify their unit and show scout spirit. We strongly encourage units to bring your flag to the evening Campfire.

Camper Information Sheet: Each unit is expected to be carrying their Camper Information Sheet & Health Forms. **Out of Council Troops:** Please adhere to your Council applicable insurance policies.

Transportation & Other vehicles: As previously mentioned, there is a limit to the number of vehicles left in camp; limit is one vehicle. All other vehicles are to be parked on the hill at the designated parking area. This is for safety as well as environmental reasons.

If you are transporting scouts to a merit badge site, you and the scouts you are transporting will be expected to bring a lunch or, if in Burlington, you may be able to purchase lunch at one of the fast food locations in town, **if time permits.**

Please park your transporting vehicle east of the flag pole before the opening ceremony.

Keep in mind

1. Don't dig unnecessary holes, trenches, etc.
2. Don't leave (Scouts or Scout Leaders) without checking out at Scout Registration.
3. Absolutely NO alcoholic beverages. Smoking allowed only in designated area, **not around Scouts!**
4. All medication & insurance documentation will be the responsibility of the Unit Leader.
5. NO individual sheath knives, axes, hatchets, etc.
6. Scouts & leaders MUST ensure that everyone has the proper equipment for camping.
7. Scouts are NOT permitted in the Republican River or on other parts of the Farm unless they are working on a Merit Badge with a Counselor.
8. Scouts are expected to adhere to the Leave No Trace and Outdoor Code in all Areas of the camp.
9. Boy Scouts are not to be in the Webelos area unless they are helping with the Webelos activities.

Remember these policies are for the safety of all our Scouts and Volunteers and will be enforced.

SCOUT COURTESY

Unit Leaders are expected to remember, communicate, and enforce the fifth point of the Scout Law during the Camporee to their units; A Scout is Courteous. We are camping in a limited camping area, and we expect each scout and scouter to be courteous to adjoining troop camping areas, as well as to each other in the true Spirit of Scouting.

CAMPOREE ACTIVITIES

Opening/Closing Ceremony

The opening ceremony will be held at **8:00 am on Saturday**. Any last-minute information about the activities for the day or any changes in merit badges will be shared at that time.

Troops will assemble again at the flagpole at 6:45pm for the retreat ceremony on Saturday evening and walk together to the campfire program.

Closing Campfire

The closing campfire will feature an OA call-out, awards for the Campsite Inspection, as well as any other special recognition. The Closing Campfire **will begin at 7:00 pm**, so we ask that Troops complete the day's activities prior to the start of the campfire.

IOLS Training

This year, there will be IOLS Training is being made available to Adult leaders. The training is a full 2 day training starting on Saturday morning. Register on the Pikes Peak Council web site.

OA Call-Outs

The closing campfire will feature call-outs for newly elected OA members from the Pikes Peak Council. Current OA members are reminded to bring their OA sash for the campfire.

Please fill in the names of your youth and adults that you would like to have called out at the Camporee, on the **Troop Registration Sheet**. There will also be an OA Brotherhood Ceremony for all eligible Candidates that choose to participate. There is an enclosed Flier for those that are interested in the process.

Unit Leader Meetings

There will be a meeting for **all Unit Leaders and SPL's** on **Friday and Saturday Evenings at 9:30 pm** at the Registration Tent. These meetings are important, as we will discuss any Camporee activity changes, safety/weather alerts, or resolve any logistical problems. We will solicit unit feedback to improve the Camporee. Please ensure that at least one leader from each unit is represented and the information mentioned at the meetings is communicated to your units. The Checkout sheets and evaluation forms will be available at this time.

Non-Denominational Church Service

A brief non-denominational church service will be held on Sunday morning for all Troops that wish to attend. *Our District Chaplain is encouraging units not only to attend the church service on Sunday, but also to provide any available youth who would like to assist in the service.* Additional information will be available at the time of registration.

YOUTH ACTIVITIES AT CAMPOREE

Scouts attending the High Plains Camporee will have four options for the activities they can participate in during the day on Saturday. The activities include:

- (1) The First Class Trail,
- (2) A Merit Badge Class,
- (3) Co-instructor on the First Class Trail,
- (4) Working as a staff assistant to the regular District Staff personnel in an assigned area.

Under no circumstances will scouts be permitted to remain in their campsite during the day on Saturday.

INTER-TROOP COMPETITION

Awards will be presented at the campfire for the top winners in each category.

CAMPSITE INSPECTION/APPEARANCE - (1st, 2nd & 3rd Place Prizes): Camping Gear - **REQUIRED**

A judging team will visit each campsite between 4-6:30 pm Saturday and inspect the campsites. Gateways will be graded based on safety, creativity, identification of unit, and originality.

NOTE: *Gadgets MUST be made with materials found onsite except rope.*

Things that will be checked:

- Tent alignment (i.e., aligned neatly in rows and columns with equal spacing). Properly erected in Patrol Areas, Camp layout (organization, neatness, etc.)

- Separate Patrol Cooking areas clean & orderly
- Campsite clean of trash/Proper fire pit & latrine
- Safety (extra fuel stored, general safety)
- Food & Equipment properly stored
- Types and variety of gadgets constructed [*Camp Gadgets - --REQUIRED! Not-Replicated from a previous year for maximum points!!*]
 - Utility or practicality of the gadget in camp
 - Uniqueness of the gadget
 - Variety and proper use of scout lashings
 - Sturdiness and safety of the gadget
 - Prepared with material on-site.
- *Gateway /Pioneering - Not-Replicated from a previous year!! – for maximum points!!*
- Campsite Fire Control (Fire Cans/Fire Safety Plan)

NOTE: This year we will be looking closely at how the Troop used the Patrol Method; particularly for campsite setup & cooking.

- Posted Fire Control Plan & Equipment/Fire Guard
- Posted Camp Attendance Roster
- Posted Camp Patrol Menus
- Posted Patrol Duty Roster
- ***Must involve all boys in the unit!!***

The judges will review the campsites during the day but ***will be available to speak to the Senior Patrol leader to review the scoring.***

NOTES ABOUT AWARD

To be eligible for this award, a unit must actively compete in ALL areas of the campsite inspection activity. The prize and prize level will be determined by the district staff based on the criteria shown above.

FIRST CLASS TRAIL (FCT)

FCT coordinator:

Mitch Howell

mjh9890@gmail.com

719-649-9890

Email / text / call with any questions. Keep in mind, cell signal is very limited at camp; Mitch will be at camp starting Thursday afternoon.

The First Class Trail (FCT) is a unique feature of the High Plains Camporee. It is designed to assist new scouts in gaining a good foundation of skills towards rank advancement. The trail is organized so that several of the required skills for Tenderfoot, Second Class, and First Class are setup as stations along the trail.

This year, the FCT will feature eight stations, plus the lunch prep station. Scouts will rotate through all eight stations during the day. Scouts will prepare a foil dinner (lunch) on the trail. There will be no need for a scout to return to their campsite during the day. Porta-potties will be available and water coolers be situated on the trail to refill water bottles.

All participants will receive a passport of requirements and a keepsake from each station to take home with them.

Each scout should “Be Prepared” with the following:

- Day pack size backpack
- Boy Scout Handbook
- Notepad
- Writing utensil
- Pocketknife
 - A general use pocket knife which contains such features as: a can opener, a screwdriver, and one or two blades for cutting, and has a locking blade are acceptable. No large sheath knives will be permitted. The knife blade should not be longer than 3 ½” and must have a locking blade.
- Water bottle
- Extra clothes / layers, dependent on weather

The Magic of the FCT...the instructors!

Each station (18 total) requires 2-3 instructors each plus (2) Trail Bosses, and (3) Fire Marshals. On the registration form, please indicate the names of those helping on the FCT (email and phone #) and their desired task. We will “do our best” to accommodate requests. The district provide training materials and supplies for each station. These materials will be emailed out well in advance of the event. Feel free to supplement additional material if desired. The stations will be set up prior to the start of the event. Seasoned scouts may help on the FCT in addition to adult leaders.

Requirements covered on the FCT

Each scout will have a passport with requirements initialed that were covered at each station. This gives each Scoutmaster an idea of skills covered during the day. Station leaders will not sign off requirements in the scout handbook. Skills covered on the FCT as follows:

Navigation (Map & Compass)

- (2nd CL,3a) Demonstrate how a compass works and how to orient a map. Use a map to point out and tell the meaning of five map symbols.
- (2nd CL,3c) Describe some hazards or injuries you might encounter on your hike and what you can do to help prevent them.
- (2nd CL,3d) Demonstrate how to find directions during the day and night without using a compass or an electronic device.
- (1st CL, 4b) Demonstrate how to use a handheld GPS unit, GPS app of a smartphone or other electronic navigation system. Use a GPS to find your current location, a destination of your choice and the route you will take to get there. Follow that route to arrive at your destination.
- (non-specific task) Navigate an orienteering course

Camp Cooking

- (Tfoot,2a) Tell why it is important for each patrol member to share in meal preparation and cleanup.
- (Tfoot,2c) Explain the importance of eating together as a patrol.
- (2nd CL,2a) Explain when it is appropriate to use a fire for cooking or other purposes and when it would not be appropriate to do so.
- (2nd CL,2e) On one campout, plan and cook one hot breakfast or lunch, explain the importance of good nutrition. Demonstrate how to transport, store and prepare the foods you selected.

Wood Tools 1 (Totin' Chip)

- Totin' Chip requirements
 - Read and understand woods tools use and safety rules from the Boy Scout Handbook.
 - Demonstrate proper handling, care, and use of the pocketknife, ax, and saw.
 - Use knife, ax, and saw as tools, not playthings.
 - Respect all safety rules to protect others.
 - Respect property. Cut living and dead trees only with permission and with good reason.
 - Subscribe to the Outdoor Code.
- (Scout,5) Demonstrate your knowledge of pocketknife safety
- (Tfoot,3d) Demonstrate the proper care, sharpening and use of the knife, saw and ax. Describe when each should be used.

Wood Tools 2 (Preparing tinder, kindling, fuel wood)

- (non-specific task) demonstrate / describe how to set up an ax yard.
- (non-specific task) Describe pocketknife, saw and ax safety.
- (2nd CL,2b) Use the tools listed in Tenderfoot requirement 3d (knife, ax, saw) to prepare tinder, kindling and fuel wood for a cooking fire.

Nature (Plant & Animal ID)

- (Tfoot, 4b) Describe common poisonous or hazardous plants, identify any that grow in your local area or campsite location. Tell how to treat exposure to them.
- (2nd CL, 1b) Explain the principles of Leave No Trace.
- (2nd CL, 4) Identify or show evidence of at least ten kinds of wild animals (such as birds, mammals, reptiles, fish, mollusks) found in your local area or camping location. You may show evidence by tracks, signs, or photographs you have taken.
- (1st CL, 5b) Identify two ways to obtain a weather forecast for an upcoming activity. Explain why

weather forecasts are important when planning an event.

Knots & Ropes

- (Scout, 4a) Show how to tie the square knot, two half-hitches and a taut-line hitch. Explain how each knot is used.
- (Scout, 4b) Show the proper care of a rope by learning how to whip and fuse the ends of different kinds of rope.
- (Tfoot, 3a) Demonstrate the practical use of the square knot.
- (Tfoot, 3b) Demonstrate the practical use of two half-hitches
- (Tfoot, 3c) Demonstrate the practical use of the taut-line hitch
- (2nd CL, 2f) Demonstrate how to tie the sheet bend knot. Describe a situation in which you would use this knot.
- (2nd CL, 2g) Demonstrate how to tie the bowline knot. Describe a situation in which you would use this knot.

First Aid

- (Tfoot, 4a) Show first aid for the following:
 - Simple cuts and scrapes
 - Blisters on the hand and foot
 - Minor (thermal/heat) burns or scalds. (superficial or 1st degree)
 - Bites or stings of insects or ticks
 - Venomous snakebite
 - Nosebleeds
 - Frostbite and sunburn
 - Choking
- (Tfoot, 4c) Tell what you can do on a campout to prevent or reduce the occurrence of injuries or exposure listed in Tenderfoot requirements 4a (first aid) and 4b (poisonous plants)
- (Tfoot, 4d) Assemble a personal first aid kit to carry with you on future campouts and hikes. Tell how each item in the kit would be used.
- (2nd CL, 6d) Explain what to do in case of accidents that require emergency response in the home and the backcountry. Explain what constitutes an emergency and what information you will need to provide a responder.
- (2nd CL, 6e) Tell how you should respond if you come upon the scene of a vehicular accident.

Fire building & stove lighting

- (2nd CL, 2c) At an approved outdoor location and time, use the tinder, kindling, and fuel wood from Scout requirement 2B to demonstrate how to build a fire. Unless prohibited, light the fire. After allowing the flames to burn safely for at least two minutes, safely extinguish the flames with minimal impact to the fire site.
- (2nd CL, 2d) Explain when it is appropriate to use a lightweight stove and when it is appropriate to use a propane stove. Set up a lightweight stove or propane stove. Light the stove. Describe the safety procedure for using these types of stoves.

MERIT BADGE PROGRAM

Many troops and scouts are repeat campers to the High Plains Camporee. In an effort to improve our merit badge program activities, we have added some additional merit badges that have not been offered previously. These badges are in addition to those badges that have become the trademark of the High Plains Camporee.

Some of these merit badges are limited to the number of boys, due to the nature and scope of the activities.

Important notes about merit badge registration

1. Merit badge registration will be *first come, first served*, if there are slots available for a Merit Badge it will be a choice to pick from. When all slots are filled that Merit Badge will not appear in the dropdown menu.
2. In completing the merit badge registration process please include all information requested. This will assist the program staff in the registration process and reduce errors.
3. Merit Badge classes with less than 5 scouts registered may be canceled.
4. All of the merit badges offered are designed to last the entire day on Saturday.
5. Pre-registration for merit badges is required.
6. Blue cards must be turned in at registration no later than 9:00 Friday night.
7. Some merit badges have pre-requisites or forms to be brought to camp.

The merit badge program is not designed as a merit badge “give-away”. Extra steps have been taken to ensure that the badges are taught in their entirety, and the boys have actually had the opportunity to earn the badge through learning, participation, and demonstration.

Adult volunteers will be responsible for the scouts in the merit badge class. It will be their responsibility to verify that all scouts present are registered, and a blue card is in the packet for the assigned merit badge, (only registered scouts will have a blue card). After the merit badge counselor has signed the blue cards in class, the cards are returned to the scout, who then passes them back to their Scoutmaster. It is the Scoutmasters’ responsibility to ensure that the correct merit badge cards for each scout are completed and returned to him prior to the Scoutmaster meeting on Saturday night. It is not possible to correct blue cards once the Camporee has ended.

If you are assigned to transport scouts to a merit badge, then **you are to remain at the merit badge site** with the youth you transport for the entire time the merit badge is being taught.

NOTES TO LEADERS ABOUT MERIT BADGES:

1. Bring a sack lunch is required for most merit badges, including merit badges conducted on the ranch.
2. Bring everything you need for the Saturday event to opening flags, or you might miss your transportation!
3. Some merit badges can't be completed in their entirety at Camporee.
4. No scout substitutions on merit badges without the merit badge registrar's approval.

SCOUTMASTER ADVANCEMENT RESPONSIBILITIES.

Blue Cards will be returned to the Scout by the Merit Badge counselor following the class. It is the responsibility of the Scout to review the Blue Card with the Scoutmaster upon completion of the Merit Badge Saturday night. **It is the Scoutmasters responsibility to check the blue cards on Saturday for accuracy and completeness. If there is a problem, it must be addressed by the end of the Scoutmaster meeting Saturday night. Changes are may NOT be possible after the Camporee ends.**

Questions about the Merit Badges should be referred to Merit Badge Coordinators: Jerry Gross, or Robin Arends, District Advancement Committee, or Bob Lightbody

2019 High Plains Camporee Merit Badge Offering

Location	Merit Badge	Counselor	Class Size	Pre-Requisites
5 STAR RANCH	ANIMAL SCIENCE	Mark Cure	20	NONE
Stratton	AUTO MAINTENANCE	Nate Smelker	10	NONE
BURLINGTON AIRPORT	AVIATION	John Stewart	15	#3b & (Must be 1st Class or 14 years of Age, signed permission slip)
MCARTHUR FARM	CAMPING	Ed Blume	20	#1c, 3, 4b,7b,8d, 9a, b, c. (Completed Days & Nights camping Log)
MORGAN COMM. COL.	DIGITAL TECHNOLOGY	Loren Roach	15	#1 (Bring a Thumb drive) Complete Cyber Chip w/signed form,
STRATTON SCOUT BLD.	ELECTRICITY	Greg Martel	14	#2, 8, 9a.
MCARTHUR FARM	EMERGENCY PREPARATION	Darren Brown	18	#1, 2c, 6c, 8b, 8c, 9. (Scout needs to build Personal and Family Emergency Kit)
21st Century Equipment	FARM MECHANICS	Norm	20	NONE
BURLINGTON FIRE DEPT	FIRE Safety	Dave	15	#6a, 13
STRATTON HS HABITAT.	FISHING	Mike Bartusek	15	#10, (Need to bring Fishing Pole& Tackle)
MCARTHUR FARM	FIRST AID	Alex Zalewski	20	Complete #1 & #5 (before attending Class)
PRAIRE PINES	GOLF	Michael Steack	14	NONE
MCARTHUR FARM	GEO-CACHING	Eric Brenkert	18	#7, 9 (Bring a GPS if you have access to 1.)
FAIRGROUNDS	HORSEMANSHIP	Sara Erker	12	NONE (Bring a Bicycle helmet)
MCARTHUR FARM	INDIAN LORE/LEATHERWORK	Karen Rau/ Mary Polley	16	NONE
MCARTHUR FARM	ORIENTEERING	Jim Borders	12	NONE (good footwear for walking)
MCARTHUR FARM	PIONEERING	John Berdon	14	NONE
MCARTHUR FARM	RADIO	Dave Molter	18	NONE
BURLINGTON SCOUT BLD.	ROBOTICS	Milt Steiner	15	NONE
DUERST MACHINE	WELDING	Mr. Einsphar	15	(Wear long sleeve shirt, leather boots and bring work gloves)
MCARTHUR FARM	WILDERNESS SURVIVAL	Jason Robinson	20	#5

MERIT BADGE CHOICES - UNIT WORKSHEET

Name: _____ Age: _____ Rank: _____ Phone #: _____

Merit Badge Choice:
1st: _____ 2nd: _____ 3rd: _____ 4th: _____

Name: _____ Age: _____ Rank: _____ Phone #: _____

Merit Badge Choice:
1st: _____ 2nd: _____ 3rd: _____ 4th: _____

Name: _____ Age: _____ Rank: _____ Phone #: _____

Merit Badge Choice:
1st: _____ 2nd: _____ 3rd: _____ 4th: _____

Name: _____ Age: _____ Rank: _____ Phone #: _____

Merit Badge Choice:
1st: _____ 2nd: _____ 3rd: _____ 4th: _____

Name: _____ Age: _____ Rank: _____ Phone #: _____

Merit Badge Choice:
1st: _____ 2nd: _____ 3rd: _____ 4th: _____

Name: _____ Age: _____ Rank: _____ Phone #: _____

Merit Badge Choice:
1st: _____ 2nd: _____ 3rd: _____ 4th: _____

Name: _____ Age: _____ Rank: _____ Phone #: _____

Merit Badge Choice:
1st: _____ 2nd: _____ 3rd: _____ 4th: _____

Name: _____ Age: _____ Rank: _____ Phone #: _____

Merit Badge Choice:
1st: _____ 2nd: _____ 3rd: _____ 4th: _____

Name: _____ Age: _____ Rank: _____ Phone #: _____

Merit Badge Choice:
1st: _____ 2nd: _____ 3rd: _____ 4th: _____

2019 CAMPOREE AGENDA

FRIDAY, APRIL 26, 2019

1:00-8:00 pm	Registration / check-in & campsite setup
9:00pm	End of registration-all blue cards must be turned in
9:30pm	Scoutmaster & SPL meeting at registration tent (Attendance required by a Troop Representative)
10:30pm	Lights out

SATURDAY, APRIL 27, 2019

6:00am	Reveille
6:00-7:55 am	Breakfast & cleanup
8:00am	First Class Trail (FCT) volunteers on FCT trail
8:00-8:30 am	Opening ceremony flags / additional event information
8:30-4:00pm	First Class Trail (FCT)
8:30am	Travel to merit badges if off-site
8:30-4:00pm	Merit Badge Classes
	<i>Note: some merit badge classes will end prior to 4:00pm</i>
1:00-3:30pm	Campsite Inspections (District Staff)
4:00-5:00pm	Scoutmaster advancement review Troop hospitality time (Visit other troops campsites)
5:00pm	Closing flag ceremony
5:00-6:45pm	Dinner preparation & cleanup
7:00-9:15pm	Campfire program
9:15pm	OA Brotherhood ceremony for eligible candidates
9:30pm	Scoutmaster & SPL meeting / feedback
9:30-11:00pm	Troop time
11:00pm	Lights out

SUNDAY, APRIL 28, 2019

6:30am	Reveille
6:30-8:20am	Breakfast & Cleanup
8:30-9:00am	Nondenominational church service (<i>at main flagpole</i>)
9:00-11:00am	Pack-up / campsite inspection / depart

CAMPOREE LOCATION/DIRECTIONS

TRAVEL FROM COLORADO SPRINGS

If you are traveling from Colorado Springs, take Hwy 24 East to Limon. Continue past the McDonalds to I-70 East. Go east on I-70 until you come to the Bethune Exit #429. Turn North (Left). The Camporee site will be approximately 16 miles North, on the Bethune Road. Watch for signs (turn left) to the Camporee that will direct you to the site.

TRAVEL FROM BURLINGTON

Take I-70 to Bethune. Turn north (right), and travel approximately 16 miles. The Camporee site will be approximately 16 miles North, on the Bethune Road. Watch for signs (turn left) to the Camporee that will direct you to the site.

*You can also search Google Maps for **McArthur Ranch, Stratton, CO**. These directions will take you to the entrance of the Camporee*

Emergency Contact, Hazardous Weather, Travel & Refund Policy

In 2016, we experienced a serious weather emergency due to rapidly changing & hazardous weather conditions. Many units were already in route to the Camporee. In most cases, we did not have an emergency unit contact identified for the Camporee staff to communicate with. To further improve our communications with each unit, as well as ensure the safety to all travelers to the extent possible. We have implemented a few changes to improve the safety situation for those traveling the lengthy distance to Bethune.

1. **Unit emergency contact person:** As part of your registration information, every unit will be required to designate an emergency contact person with a cell phone number and email address who will be responsible for immediately conveying information about travel conditions & other relevant information to their unit leaders. The emergency contact person will be the one individual that the Camporee staff will communicate vital information to about Weather & Travel/Road conditions as best as the Camporee staff can determine at the time of the communication. This information will be part of the registration spreadsheet submitted to register a unit for Camporee.

2. **Camporee Hazardous Communication Website:**

<https://www.pikespeakbsa.org/HighPlains/Events/HighPlainsCamporee>

The High Plains Camporee staff has established a temporary web page which will contain any last-minute updates/changes to the Camporee Event, as well as emergency weather & travel updates as best that they can be determined from Burlington & U.S. Weather Service in Goodland, Kansas.

This link will allow travelers already in route to check weather & road conditions/closures in the Bethune/Burlington area and indicate time & date of these last updates for safety purposes.

3. **Individual unit responsibilities for cancellation:**

Individual unit leadership always makes the final determination of whether their unit will travel to Camporee or not, based on their own assessment of travel, weather and road conditions. If a unit determines that they will not attend they must notify the Camporee Chairperson Bob Lightbody by Friday, April 26th at 9pm. This will assist the Camporee staff in accounting for all registered participants in case of an emergency.

4. **Alternate Camporee site:** If the road conditions on the Bethune Road are determined to be unsafe for travel, but the road conditions traveling to Burlington / Bethune are determined to be adequate for safe travel, the Camporee event may still be held, but events may be relocated to alternate sites in Burlington for the weekend. If this option is implemented, some events may need to be modified or eliminated for that weekend.

5. **Refund policy for Camporee cancelation or event modification**
Such a determination will only be made by the Camporee staff after consideration of road / travel / weather conditions at the Camporee site.

If the event is cancelled, a refund will be provided, minus the amount needed to cover Camporee expenses.

HEALTH FORMS

Complete a 2019 health form for each scout and scouter attending the event.

Please complete the form online, print and give to the unit leader
Unit Leader will keep forms during the High Plains Camporee

Complete parts A&B of the informed consent, release agreement and authorization as well as the general information / health history for each scout & scouter.

http://www.scouting.org/filestore/HealthSafety/pdf/680-001_AB.pdf



BSA AVIATION FLIGHTS

Please complete this form BEFORE arriving at the Camporee if you are taking the Aviation Merit Badge

If the form does not accompany the scout at Camporee, the scout will not be permitted to fly in the Aviation Merit Badge, yet the badge can still be completed without flying in a plane.

PARENT/GUARDIAN CONSENT FORM FOR BSA AVIATION FLIGHTS

I certify that I am the parent or legal guardian of the participant listed below, and I give my consent for him/her to participate in flight/flights listed. I understand that participation in aviation activities involves a certain degree of risk that could result in injury or death. I have carefully considered the risk involved and agree to hold the Boy Scout of America, Inc. the Pikes Peak Council, BSA (this is your local council), their agents and employees, and the Merit Badge Counselors harmless for all personal injury which could result from participation in this flying program.

Date of flight: April 21, 2018

Name of Boy Scout / Venturer

Parent/Guardian Signature

Parent/Guardian Signature

Please complete this form BEFORE arriving at the Camporee if you are taking the Aviation Merit Badge

BROTHERHOOD TRAINING AND CEREMONY



The High Plains Camporee will have an OA Brotherhood Ceremony after the campfire, Saturday April 29th. If you have been an OA member for at least 10 months by Camporee, please join us in making this simple transition to Order of the Arrow (OA) Brotherhood.

(Details at <http://jumpstart.oa-bsa.org/> (password is obligation))

To help you on your journey and to prepare you for Brotherhood, please attend the Brotherhood Training to learn how easy the next step is in the Order of the Arrow. The Brotherhood Training is recommended and useful, but not required.

Brotherhood Training

Registration is not required and there are no fees for the Brotherhood Training, just show up!

Date	Time	Event	Location
April 10, 2019	6:00PM	Brotherhood Training	Council Activity Center

Brotherhood Ceremony

Date	Time	Event	Location
April 27, 2019	9:15PM	Brotherhood Ceremony	High Plains Camporee

You must register at Council or online at <http://www.pikespeakbsa.org/Event.aspx?id=4135>

The cost of Brotherhood is just \$20.00 and that fee goes to cover the cost of your NEW Brotherhood Sash

Wear your full field uniform with Ordeal Sash and bring the completed letter to the ceremony. Please address the letter to **Lodge 387 Secretary** and bring it to the Brotherhood Ceremony.

(Are you asking, what letter? See <http://jumpstart.oa-bsa.org/> password: obligation).

If you have any questions, contact the Brotherhood Committee at brotherhood@hakinskayaki.org

First Class Trail

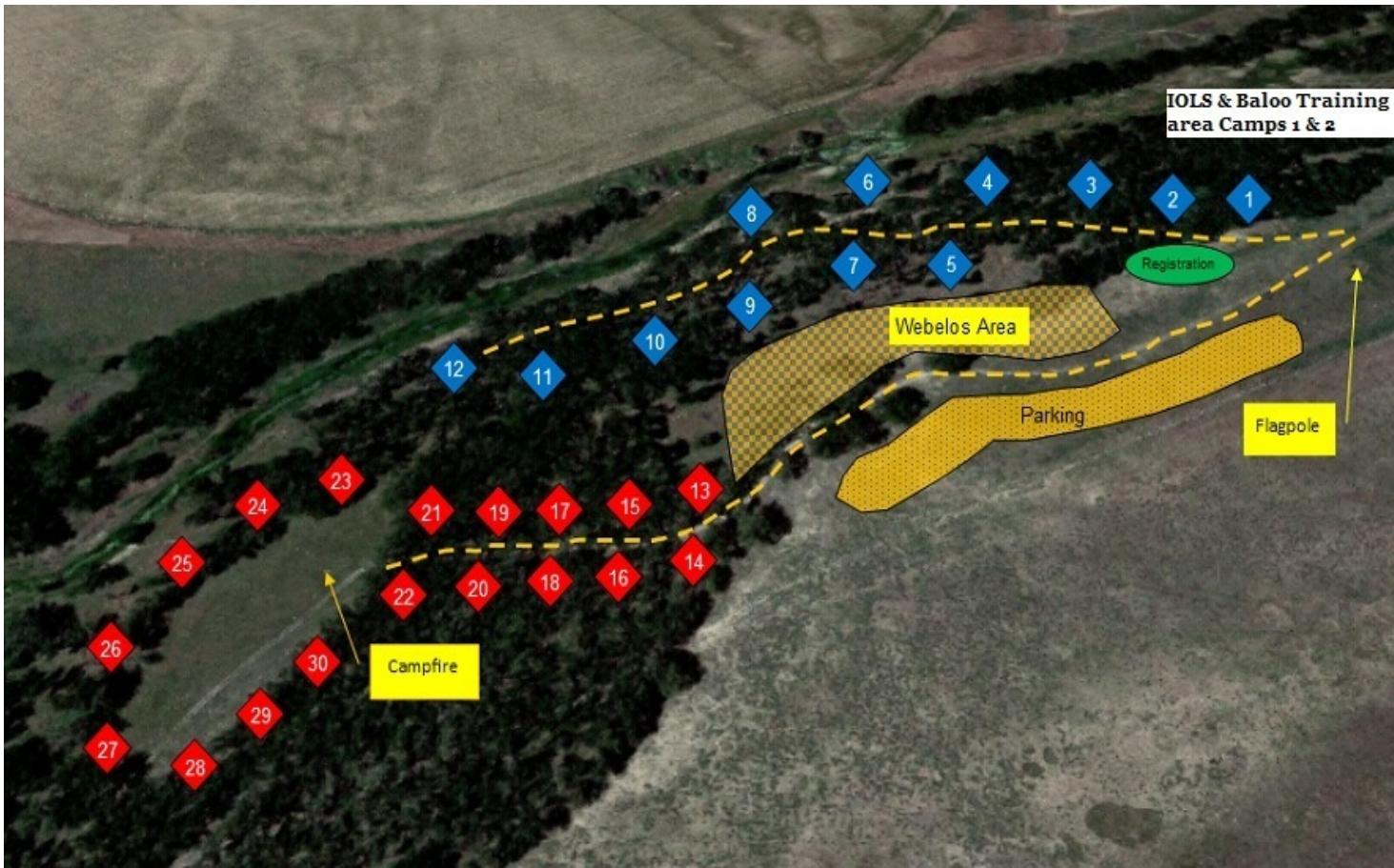


Red Course

-  Lunch Prep
-  Navigation
-  Camp Cooking
-  Wood Tools 1
-  Wood Tools 2
-  Nature
-  Knots
-  First Aid
-  Fire Building

Blue Course

-  Lunch Prep
-  Navigation
-  Camp Cooking
-  Wood Tools 1
-  Wood Tools 2
-  Nature
-  Knots
-  First Aid
-  Fire Building



Campsite capacity recommendations

Campsites # 5, 7, 8, 14, 16, 29, 30	4-6 Tents
Campsites # 3, 4, 6, 9, 10, 11, 22	5-10 Tents
Campsites # 13, 15, 17, 18, 19, 20	8-15 Tents
Campsites # 12, 21, 23, 24, 25, 26, 27, 28	15 + Tents